

The Latest Word



“Making God Known Through Word and Deed.”



What is the Endowment Fund Anyway?

Simply put, the Endowment Fund is a permanent savings account for the church that is invested. A portion of the interest earned on the church's investments is used to fund the congregation's programs and missions that reach beyond our annual budget. The LCOOR Endowment Fund is broken down into five categories with specific purposes.

The General Fund supports the church's overall mission and ministry.

The Capital Fund assists with major improvements to our buildings and grounds.

The Outreach Fund supports special mission endeavors and is designed to extend our ministry locally, nationally, and globally.

The Faith Formation Fund supports new or existing church programs to extend their mission and purpose.

The Technical School Fund provides scholarships to LCOOR students who pursue full-time study in accredited vocational, technical or career certificate programs in South Dakota.

The most amazing part about the Endowment Fund is the impact that it makes on our ministry and mission. In just the past three years the impact has been significant. The following list is just a few examples: Grants to the Quilting group, housing

assistance through Watertown Cares, Support to the Watertown Sandwich Ministry, Gift to the LCOOR Preschool for classroom supplies, Funding for Hospice Gowns and supplies for Global Health Kits. These gifts are tangible signs of faith in action.

Giving to the Mission and Endowment Fund is not just for those with significant wealth. Gifts of any size are welcome and meaningful. Contributions can be made through cash, securities, retirement distributions, life insurance policies, or by including LCOOR in your will or estate plan. Some gifts may offer tax benefits, and members are encouraged to consult with a financial advisor or attorney.

When you give to the Endowment Fund, you are planting seeds that will bear fruit long after today. It is a way to express trust in God's future, confidence in this congregation, and love for those who will one day call LCOOR their church home. Together, we continue a legacy of faith.

If you would like more information or are interested in making an endowment gift, please contact Jodi Spilde, Pastor Laura, or a member of the Endowment Committee: Becky Conger, Deb Shephard, Ann DeSpiegler, Barb Struwe, Kristi Reiersen, Jeanne Zander, and Council Liaison Jessica Kruse.

Financial Reports & News



February Mission of the Month Report

Our February Mission of the Month was dedicated to supporting the LCOOR Preschool.

Thanks to your generosity, a total of **\$607.85** was raised through the Noisy Can and special offerings. Combined with an additional **\$1,000** from the budget, the preschool received **\$1,607.85** in support.

These gifts help sustain a program rooted in faith, learning, and play—providing a caring environment where children grow academically, socially, and spiritually. Just as importantly, this ministry supports families in our community by offering a strong foundation for their children's early years. Thank you for making a meaningful difference!

Thrivent Choice Dollars Received

We are grateful to share that our congregation recently received Thrivent Choice Dollars totaling **\$502**, supporting both our preschool and the broader mission and ministry of our church.

LCOOR Preschool – \$257

Thank you to Burt Andersh, Chris Chandler, Bob Davis, Nikki Landmark, Sharon Malcom, Michael Passow, Jodi Spilde, and Kim Turbak for directing your Thrivent Choice Dollars to our preschool ministry. Your generosity helps provide faith-filled learning experiences, essential classroom resources, and a nurturing environment where young children can grow in both knowledge and in God's love. Your support is an investment in the lives and faith of our youngest learners.

LCOOR Mission & Ministry – \$245

We also extend our thanks to Burdette & Janet Drake, Kenda Falconer, Gerry Likness, Don Scharn, and Greg & Sandy Zubke for supporting the mission and ministry of our church. Your gifts help us continue to share Christ's love through worship, faith formation, outreach, and compassionate care within our community and beyond.

We give thanks for each of you and for the meaningful difference your generosity makes. Your partnership in ministry is a true blessing to our church family.



Memorials and Special Gifts Received

LCOOR Preschool

We are grateful for the following gift given in memory of Gretchen Morrow Bray:

- from Matt & Wendy Olson

Financial Reports & News



Gift Card Fundraiser – An Easy Way to Support Our Preschool

Supporting LCOOR Preschool can be as simple as your everyday shopping! By purchasing SCRIP (gift cards) to your favorite stores, a portion of each purchase goes directly to support our preschool ministry—at no extra cost to you.

There's no added expense and no extra time needed—just a simple way to turn routine shopping into meaningful support for our young learners.

Gift cards are available at the Welcome Center or in the church office. We now have Perkins and Scheels gift cards on hand, along with many other popular stores and restaurants.

Shop. Earn. Support. It's that easy!

April Mission of the Month: Lutheran Campus Ministry



Our April Mission of the Month supports Lutheran Campus Ministry, a ministry that walks alongside young adults as they navigate life on college campuses.

Campus Ministry creates space for meaningful conversations, supportive relationships, and opportunities to grow in faith—all while engaging the realities of college life. Rooted in Scripture and the Lutheran tradition, this ministry shares the message of God's grace in ways that connect with everyday life. Through worship, Bible study, fellowship, and service, students and campus communities are reminded they are not alone and are deeply loved by God.

Your support helps provide encouragement, community, and a strong foundation for young adults during an important season of life. Please consider giving above and beyond your regular offering to support (LuMin) Lutheran Campus Ministry of South Dakota. Be sure to clearly mark your donation as "Mission of the Month" when giving during May. Thank you for your generosity! To learn more, visit: sdsynod.org/ministries/campus.



Lutheran World Relief: Quilt & Kit Shipping Fund



When we make LWR Quilts and Kits, we join countless others across the country who reach out to people in need around the world through this ministry.

LWR spends around \$3.3 million to operate this program, distributing about \$20 million worth of quilts and kits each year.

LWR's approximate cost to transport, process, store and deliver quilts and kits near and far is \$4.00 per item. You can help! Consider giving a gift toward the Quilt & Kit Shipping Fund. Clearly mark your donation Quilt & Kit Shipping Fund.

LCOOR News & Events



Spring Market: Craft Show and Vendor Fair - Saturday, May 9

Calling All Crafters, Vendors and Shoppers!

Join us for our Spring Market: Craft Show and Vendor Fair at Lutheran Church of Our Redeemer in Watertown, SD on **Saturday, May 9 from 9:00 a.m. - 3:00 p.m.** This is a wonderful opportunity to showcase your handmade goods, unique products, or small business offerings.

To sign up as a vendor, visit our website at www.lcoorwatertown.org, click the 'Serve' tab on the main menu and find the Spring Market Vendor Signup or scan the QR code.



Once you've signed up, we'll reach out to you via email to collect payment. **You can choose to pay online or send/drop off your payment at the church office:**

Lutheran Church of Our Redeemer
2001 2nd St. NW
Watertown, SD 57201

Vendor Setup Times:

Friday, May 8 from 5:00 - 8:00 p.m.
Saturday, May 9 from 7:15 - 8:45 a.m.

Spots are limited, so be sure to sign up early!
Payment is due by Friday, May 1.

Shoppers: mark your calendars, call your friends and we look forward to seeing you!

Spring Market Congregation Table

Our congregation will be hosting a table at the upcoming Spring Market, and we would love your help! We are currently accepting donations of items to sell, such as canned goods, baked treats, and handmade or crafted items.

Donations can be dropped off at the church office before the event. On the day of the craft and vendor show, Karri Willhite will be at the table selling items, with all proceeds going to a local charity (to be determined). Thank you for your support!

Circle Bible Study

- Martha Circle will meet at **2:00 p.m. on Monday, April 13 and Monday, May 11**, in the Gathering Space.
- Priscilla Circle will meet at **9:30 a.m. on Wednesday, April 8 and Wednesday, May 13**, in the Gathering Space.



April Book Club

The LCOOR Book Club will meet on **Thursday, April 23 at 10:00 a.m. in the Youth Room.** The book for April is *The Correspondent* by Virginia Evans.

LCOOR Preschool



Thank You for Your Support!

A BIG thank you to all of you who purchased items through Rada Cutlery and gave to the Giving Wall. We really appreciate your support! We also want to thank the parents and students for going out and selling the fundraiser items! We couldn't make this program a success without all of you.



April Calendar

April 6

No School (Easter Monday)

April 9

Chapel

April 13

Library

April 23

No School (Parent-Teacher Conferences)

Care to Help Our Preschool? ★

- New/Used toys
- Support Fundraisers
- Classroom Giving Tree
- Scrip Dollars
- Thrivent Choice Dollars
- Snacks/Juice

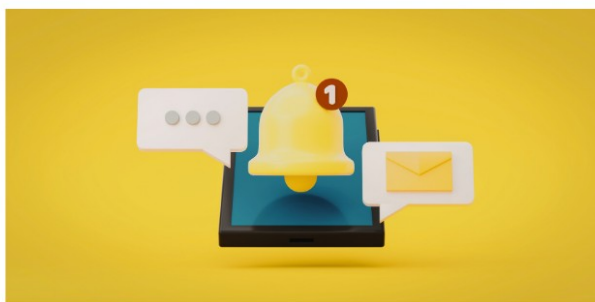


Faith Formation & Youth Updates

Church School & Confirmation Schedule Reminders

- **Church School** is Sunday at 8:45 a.m. and Wednesday at 5:45 p.m.
- **Confirmation** is Sunday at 8:30 a.m. and Wednesday at 5:30 p.m.

There will be **no church school or confirmation on Wednesday, April 1 and Sunday, April 5** due to Holy Week and the Easter holiday. Class will resume the following week Wednesday, April 8 and Sunday, April 12.



Upcoming Dates to Note

- First Communion for 2nd grade students will be held on **Maundy Thursday, April 2 at 6:30 p.m.**
- 8th grade confirmation services will be held on **Sunday, April 26 at 9:30 a.m.** and **Wednesday, April 29 at 6:30 p.m.**
- High School Senior Recognition and Teacher Appreciation will be held **Sunday, May 3 at 9:30 a.m.** and **Wednesday, May 6 at 6:30 p.m.** This is also the last day for church school for the school year.
- Vacation Bible School will be **Tuesday, May 26, Wednesday, May 27 and Thursday, May 28 from 5 to 8 p.m.** VBS is for ages 3 years old to 4th grade and registration is now open on our website!



Junction & Route 56 Youth Group

Junction, a youth group for 1st-4th grade and Route 56, a youth group for 5th-6th grade will meet TOGETHER on **Thursday, April 30, from 6:00-7:00 p.m.** Join us for a bible verse, games, crafts, snacks and fellowship. Friends are always welcome!



Luther League

Luther League is for 9th-12th grade students. **We meet every Wednesday after Worship.** Please join us for a variety of bible study, treats, games, service projects and fellowship.

S U M M E R

Summer Schedule for Junction & Route 56

Junction & Route 56 will be combined for the summer months. Dates for the summer will be **Thursday, June 18, Thursday, July 16 and Thursday, Aug., 13.** with fun summer activities planned!

LUTHERAN CHURCH OF OUR REDEEMER



TRUE NORTH

Trusting Jesus in a Wild World

VBS



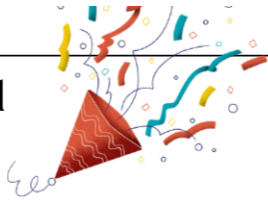
PRE-K
THRU
4TH GRADE

MAY 26-28, 2026
5-8PM
MEALS SERVED

REGISTER ON
OUR WEBSITE
OR SCAN THE
QR CODE.

New Members Welcomed

- Carly Filbert
- Cynthia D. Maffei
- Brian, Katie & Cynthia Graeb, Josephine & Carmen Bertrand
- Carrie & Jameson Bartscher, Jaidyn & Leighton Bartscher
- Steve & Joan Jorgenson
- Scott Leitheiser
- Chad & Karen Knutson



Your Life Can Make a Difference



Lutheran Planned Generosity of South Dakota, a partner of the South Dakota Synod, helps you align your financial, tax, and estate planning with your faith and values. Whether making a gift today or creating a legacy plan, thoughtful planning can support your loved ones and the ministries you care about while making a lasting difference.

We invite you to join us for an evening with **Kathy McHenry** who will share insights on how you can create a legacy through planning.

Thursday, April 16 | 6:00 PM
Lutheran Church of Our Redeemer

Please RSVP by **Wednesday, April 8** at office@lcoorwatertown.org or 605-886-2696.

Holy Week and Easter Schedule



Maundy Thursday (April 2): Worship with First Communion and Holy Communion at 6:30 p.m.

Good Friday (April 3): Tenebrae Worship at 6:30 p.m.

Easter Sunday (April 5): 8:00 a.m. & 9:30 a.m. Worship with Special Music and Holy Communion



Deadline for the May 2026 Newsletter:
Monday, April 20, 2026

Church Council

President Alan Stager
 Vice President Matt Blackwelder
 Secretary Kim Pearson
 Treasurer Jessica Kruse
 Jan Birkeland | Cindy Day | Scott Leitheiser
 Bret McGillivary | Dana Stimson



Address
 2001 2nd St. NW
 Watertown, SD 57201



Phone
 605-886-2696



Website
<https://lcoorwatertown.org/>



Prayer Chain
 Marilyn Chapman 886-4858
 Email: karri@lcoorwatertown.org



Facebook
www.facebook.com/lcoor



Youtube
<https://www.youtube.com/c/LutheranChurchofOurRedeemer>

Staff

Senior Pastor Dan Overbo
 Associate Pastor Laura Overbo
 Preschool Teacher/Director Nikki Landmark
 Preschool Teacher Aide Wendy Kruger
 Welcoming & Caring Ministries Karri Willhite
 Business Manager Jodi Spilde
 Business Administrative Assistant Megan Thyen
 Director of Faith Formation Wendy Kruger
 Sound & Technology Sam Langner
 Custodian Roman Gainor

Sunday	Monday	Tuesday	Wednesday	Thursday	Friday	Saturday
<p>29 Palm Sunday 8:30am Confirmation Workshop 8:45am Church School 9:30am Worship (3 Year Old's-6th Grade Sings) 10:30am Praise & Rejoice Choir Rehearsal 10:30am Spring Festival</p>	<p>30 8:00am Watertown Sandwich Ministry 6:45pm Al-Anon</p>	<p>31 Timmerman Scholarship Application Deadline 11:00am Area Pastor TEXT STUDY 1:00pm Staff Meeting</p>	<p>1 No Worship or Programs (Holy Week) No Community Meal 8:00am Watertown Sandwich Ministry</p>	<p>2 Maundy Thursday 9:00am Quilting 5:15pm Al-Anon 6:30pm Maundy Thursday Worship with Holy Communion & First Communion 7:30pm Handbell Rehearsal</p>	<p>3 Church Office Closes at Noon Good Friday 6:30pm Good Friday Worship</p>	<p>4 10am Delivery of Easter Plants No Saturday Evening Meal (Holy Week) No Worship (Holy Week)</p>
<p>5 Easter Sunday No Church School or Confirmation (Easter Sunday) 8:00am Easter Worship with Holy Communion 9:30am Easter Worship with Holy Communion</p>	<p>6 Church Office Closed No Preschool-Easter Monday 8:00am Watertown Sandwich Ministry 6:45pm Al-Anon</p>	<p>7 10:00am Prayer Shawl Group 11:00am Area Pastor TEXT STUDY 1:00pm Staff Meeting</p>	<p>8 8th Grade Confirmation Picture 8:00am Watertown Sandwich Ministry 9:30am Pricilla circle 2:00pm Watertown Parkinson's Support Group 5:00pm Community Meal 5:30pm Confirmation Workshop 5:45pm Church School 6:30pm Worship with Holy Communion 7:15pm 6th Grade Confirmation Preparation Meeting 7:15pm Handbell Rehearsal 7:15pm Luther League (9-12 Grade)</p>	<p>9 5:15pm Al-Anon</p>	<p>10 Church Office Closes at Noon 8:00am Watertown Sandwich Ministry</p>	<p>11 5:30pm Worship</p>

Sunday	Monday	Tuesday	Wednesday	Thursday	Friday	Saturday
<p>12</p> <p>8:30am Confirmation Workshop 8:45am Church School 9:30am Worship 10:30am Praise & Rejoice Choir Rehearsal</p>	<p>13</p> <p>8:00am Watertown Sandwich Ministry 2:00pm Martha circle meeting 2:00pm Quilting Bible Study 6:45pm Al-Anon</p>	<p>14</p> <p>11:00am Area Pastor TEXT STUDY 1:00pm Staff Meeting 2:00pm Quilting Bible Study "The Word in Patchwork" 5:15pm Mission & Endowment Committee Meeting 6:00pm Executive Committee 6:30pm Church Council Meeting</p>	<p>15</p> <p>8:00am Watertown Sandwich Ministry 5:00pm Community Meal 5:30pm Confirmation Workshop 5:45pm Church School 6:30pm Worship 7:15pm Handbell Rehearsal 7:15pm Luther League (9-12 Grade)</p>	<p>16</p> <p>9:00am Quilting 5:15pm Al-Anon 6:00pm Kathy McHenry, Luth. Planned Generosity</p>	<p>17</p> <p>Church Office Closes at Noon 8:00am Watertown Sandwich Ministry 9:00am Quilting</p>	<p>18</p> <p>5:30pm Worship with Holy Communion</p>
<p>19</p> <p>8:30am Confirmation Workshop 8:45am Church School 9:30am Worship with Holy Communion</p>	<p>20</p> <p>May Newsletter Deadline 8:00am Watertown Sandwich Ministry 6:45pm Al-Anon</p>	<p>21</p> <p>10:00am Prayer Shawl Group 11:00am Area Pastor TEXT STUDY</p>	<p>22</p> <p>8:00am Watertown Sandwich Ministry 5:00pm Community Meal 5:30pm Confirmation Workshop 5:45pm Church School 6:30pm Worship with Holy Communion 7:15pm Handbell Rehearsal 7:15pm Luther League (9-12 Grade)</p>	<p>23</p> <p>No Preschool (Parent Teacher Conferences) 10:00am Book Club 5:15pm Al-Anon</p>	<p>24</p> <p>Church Office Closes at Noon 8:00am Watertown Sandwich Ministry</p>	<p>25</p> <p>Prairie Coteau WELCA Spring Conference - Milbank 5:30pm Worship</p>
<p>26</p> <p>8:45am Church School 9:30am Worship (8th Grade Confirmation) 10:30am Praise & Rejoice Choir Rehearsal</p>	<p>27</p> <p>8:00am Watertown Sandwich Ministry 6:45pm Al-Anon</p>	<p>28</p> <p>9:00am Sewing Ministry Group 11:00am Area Pastor TEXT STUDY 1:00pm Staff Meeting</p>	<p>29</p> <p>8:00am Watertown Sandwich Ministry 5:00pm Community Meal 5:45pm Church School 6:30pm Worship (8th Grade Confirmation) 7:15pm Handbell Rehearsal 7:15pm Luther League (9-12 Grade)</p>	<p>30</p> <p>5:15pm Al-Anon 6:00pm Junction (for grades 1st to 4th) and Route 56 (for 5th to 6th)</p>	<p>1</p> <p>Church Office Closes at Noon 8:00am Watertown Sandwich Ministry</p>	<p>2</p> <p>5:30pm Worship with Holy Communion 6:30pm Saturday Evening Meal</p>